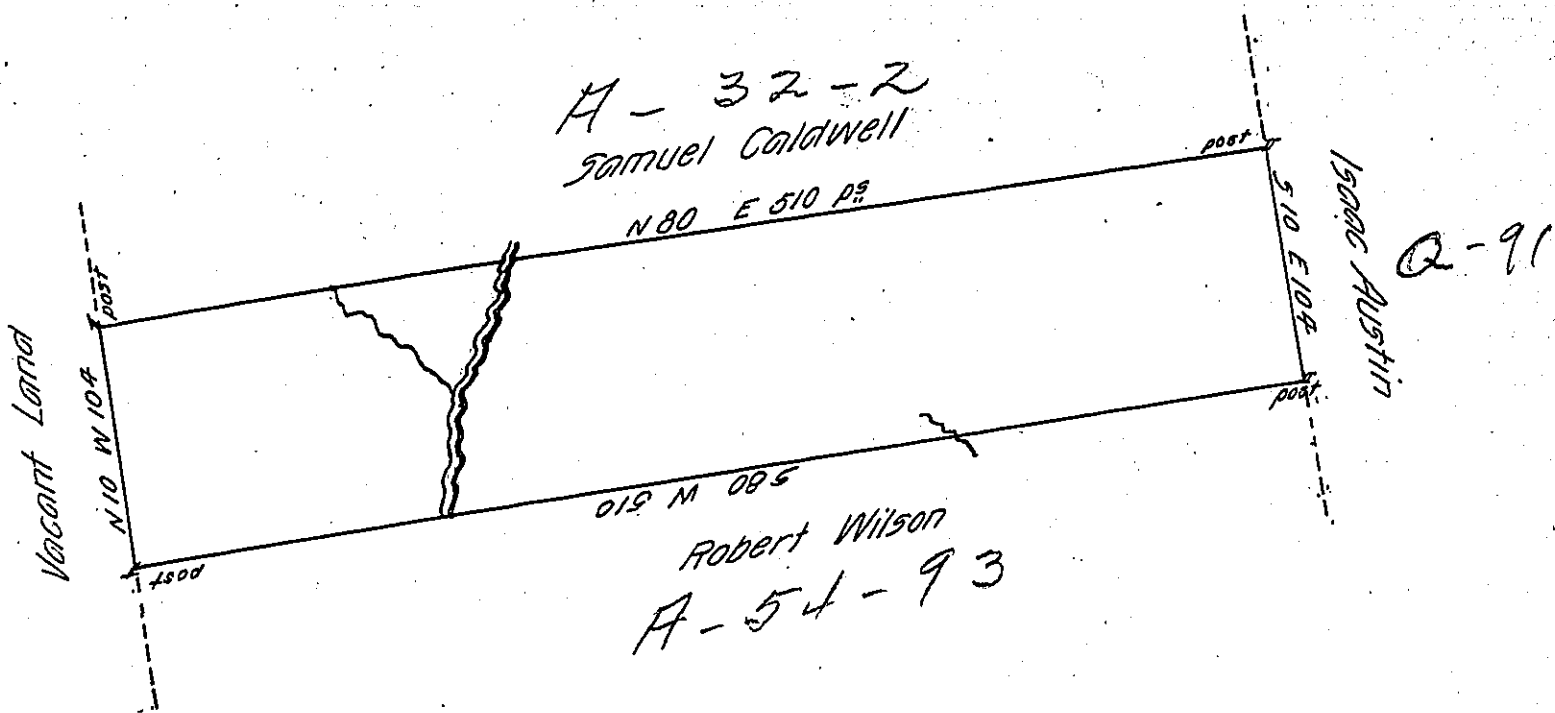


Now Wayne County



By Virtue of a warrant dated the 27th of February 1775 and surveyed the 7th of November 1776 to Thomas Lowry the above described tract of land situate on the west branch of Lachawaxen Creek in Northampton County Containing three hundred & twelve acres an hundred and seventeen perches and the allowance of six P cent &c.^o
 To John Lukens Esq. } P-Geo Palmer D.S.
 Surveyor General }

IN TESTIMONY that the above is a copy of the original remaining on file in the Department of Internal Affairs of Pennsylvania, made conformably to an Act of Assembly approved the 16th day of February, 1833, I have hereunto set my Hand and caused the Seal of said Department to be affixed at Harrisburg, this twentieth day of September 1905

Geo P Brown
 Secretary of Internal Affairs.